



GAT MONTHLY MEMBERSHIP PROGRESS REPORT

Results as of: 5/31/2024

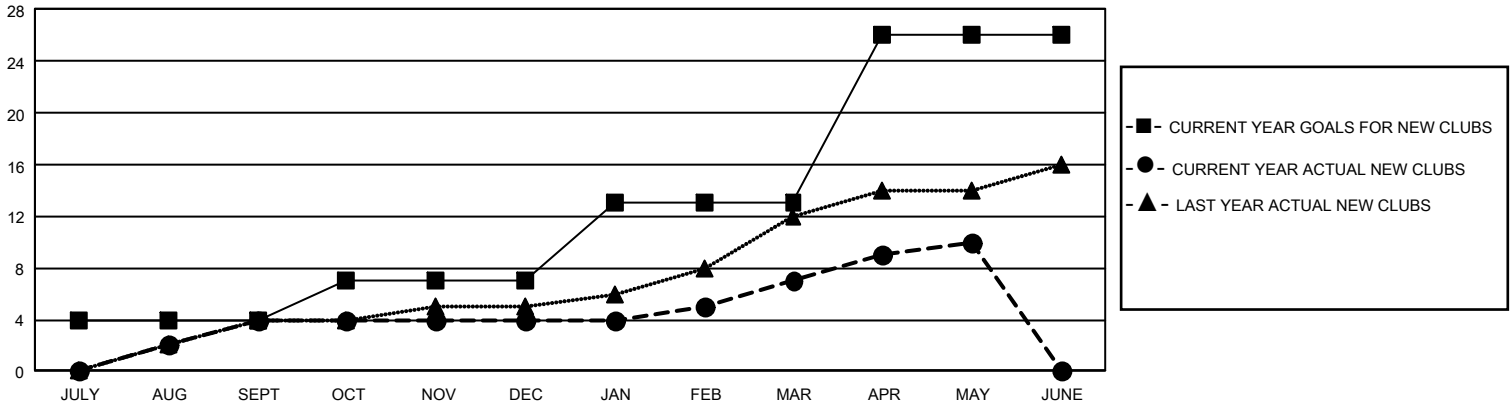
GMT Constitutional Area 7, Group A

REPORT DOES NOT INCLUDE CLUBS IN UNDISTRICTED AREAS.

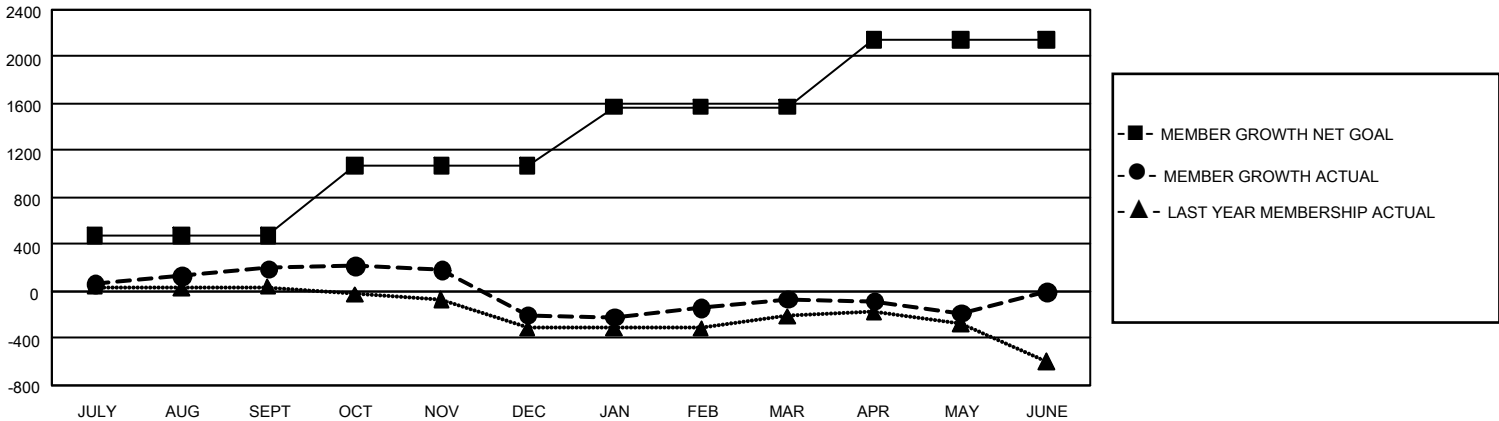
Clubs			
RESULTS FOR 2023-2024			
QUARTER	NEW CLUB GOAL	NEW CLUBS	DROPPED CLUBS
JULY/AUG/SEPT	12	4	10
OCT/NOV/DEC	9	0	2
JAN/FEB/MAR	18	3	2
APR/MAY/JUNE	39	3	3

Members			
RESULTS FOR 2023-2024			
QUARTER	MEMBER GROWTH NET GOAL	MEMBER GROWTH ACTUAL	DROPPED MEMBERS ACTUAL (including transfers)
JULY/AUG/SEPT	475	897	607
OCT/NOV/DEC	597	579	900
JAN/FEB/MAR	500	925	681
APR/MAY/JUNE	575	529	559

GOALS AND ACTUAL NEW CLUBS CUMULATIVE



GOALS AND ACTUAL MEMBERS CUMULATIVE



DROPPED CLUBS: 17	736 CLUBS OF 1,157 ADDED 1 OR MORE NEW MEMBERS	GENDER DISTRIBUTION	
		MALE 13,756 (61.41%) FEMALE 8,629 (38.52%) NON BINARY 6 (0.03%) PREFER NOT TO ANSWER 11 (0.05%)	
DROPPED MEMBERS		CLICK HERE FOR CUMULATIVE MEMBERSHIP DATA	
DECEASED 301 CLUB CANCELLED 30 OTHER 2,387 TOTAL 2,718	TOTAL FAMILY UNIT MEMBERS 3,440 FAMILY MEMBERS PAYING HALF DUES 1,758		